

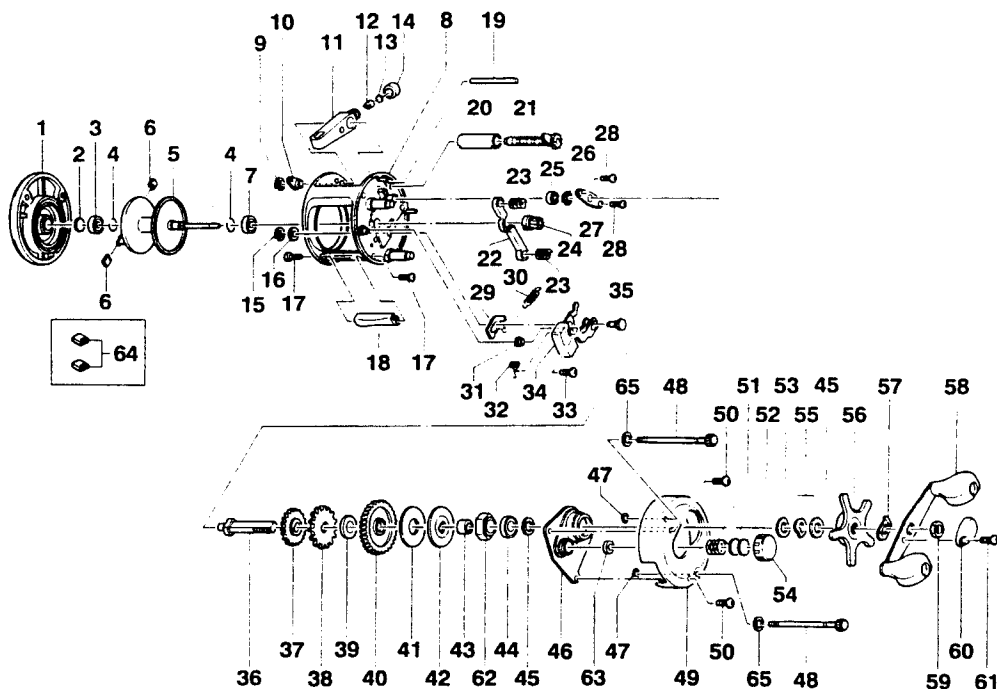
# BROWNING MIDAS 6HS

## SPECIFICATIONS:

6 Bearings  
 6.3:1 Gear Ratio  
 9.0 oz. Weight  
 165 yds./12 lb. Line Capacity

## FEATURES:

1 piece die cast aluminum frame  
 Thumb Button Spool Release  
 Extra-wide, high-strength Gear System  
 Machined Aluminum Spool  
 Aluminum Side Covers  
 Double Sealed stainless steel ball bearings  
 Centrifugal Brake System



Key No.	Part No.	Description	Price	Key No.	Part No.	Description	Price
1	XX323-05	Left Side Cover Assy	19.21	33	XX050-01	Screw - Release Slider	.11
2	XX038-02	Spool Shaft Washer	.21	34	JX339-02	Release Slider Assy	1.81
3	JX106-01	Bearing - Spool Shaft	6.39	35	JX102-01	Post - Kick Lever Guide	.91
4	JX080-01	Clip Ring	.26	36	JX008-01	Crank Shaft	3.31
5	JX321-02	Spool Assy	21.63	37	JX112-01	O/S Drive Gear	.71
6	XX044-01	Brake Shoe B	.21	38	JX083-01	Trip Ratchet	1.01
7	JX106-01	Bearing - Spool Shaft	6.39	39	JX111-01	Washer - Ratchet	.51
8	JX301-02	Frame Assy	37.34	40	XX012-01	Drive Gear	8.71
9	QW120-01	E-Clip - Worm Shaft	.15	41	JX059-01	Drag Disc	.21
10	JX067-01	Bushing - Worm Shaft	.31	42	JX045-01	Drag "D" Washer	.91
11	JX347-02	Line Guide Carrier Assy	2.32	43	CW052-01	Sleeve - One Way Bearing	3.01
12	JX006-01	Line Guide Pawl	1.80	44	TW058-01	Bearing - Crank Shaft (U)	6.11
13	JX035-01	Washer - Line Guide Pawl	.21	45	JX038-01	Crank Shaft Washer	.31
14	JX007-02	Screw - Line Guide Carrier	.52	46	JX066-02	Crank Shaft Guide	3.31
15	NX092-01	E-Clip - Kick Lever Guide Post	.15	47	JX073-01	O-Ring - Thumb Screw	.31
16	XX035-01	Washer - Kick Lever Guide	.98	48	XX374-01	Thumb Screw Assy	2.61
17	JX050-01	Screw - Thumb Rest	.36	49	JX024-10	Right Side Cover	10.31
18	JX009-02	Thumb Rest	.62	50	QW123-05	Right Side Cover Screw	.61
19	JX061-01	Line Guide Carrier Guide	1.13	51	JX105-01	Spring - Tension Knob	.31
20	JX016-01	Worm Shaft Guide	.82	52	QW032-02	Washer - Spool Tension	.21
21	JX372-01	Worm Shaft Assy	7.88	53	JX082-01	Washer - Cushion	.81
22	JX025-01	Pinion Yoke	.62	54	XX033-01	Spool Tension Knob	2.81
23	JX040-01	Yoke Spring	.15	55	JX046-01	Spring "D" Washer	.71
24	XX011-01	Pinion Gear	5.95	56	XX355-02	Star Drag Assy	3.41
25	XX017-01	Bearing - Crank Shaft (L)	5.05	57	NX054-01	Handle Washer	.11
26	QW120-01	E-Clip - Crank Shaft	.15	58	VW318-02	Handle Assy	11.61
27	JX002-01	Retainer - Crank Shaft	.62	59	QW003-01	Handle Nut	.41
28	JX107-01	Screw - Crank Shaft Retainer	.15	60	QW034-03	Handle Nut Cap	1.01
29	JX077-01	Kick Lever	.62	61	QW123-05	Handle Nut Cap Screw	.61
30	JX097-01	Spring - Kick Lever	.21	62	UQ063-02	One Way Bearing	7.51
31	JX068-01	Bushing - Release Slider Guide	1.24	63	XX117-01	Bearing - Tension Knob	5.41
32	JX104-01	Spring - Release Slider	.21	65	JX121-01	Washer - Thumb Screw	.21

<b>MODEL INTRODUCED</b>	<b>EFFECTIVE DATE OF PARTS LIST/DIAGRAM</b>	Oct. 1996	<b>DISCONTINUED</b>	N/A
-------------------------	---	-----------	---------------------	-----

Prices subject to change without notice. Prices do not include postage and handling.

**DI BASE ORDER BY PART NUMBER** Zebco Division Brunswick Corporation, Box 270, Tulsa, OK 74101 USA 918-831-6965

